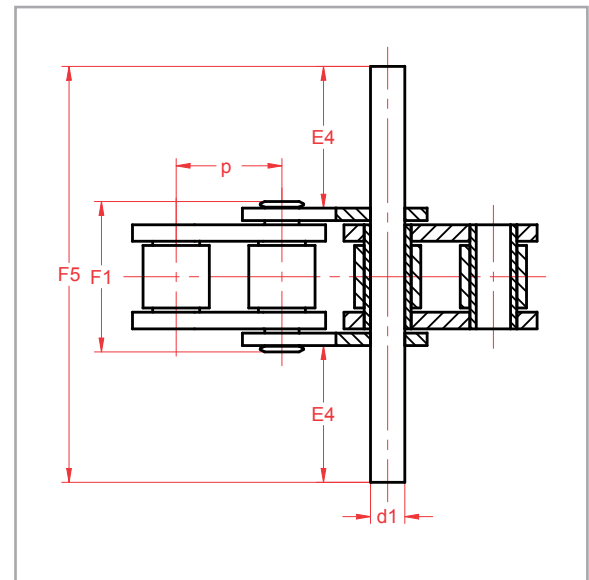
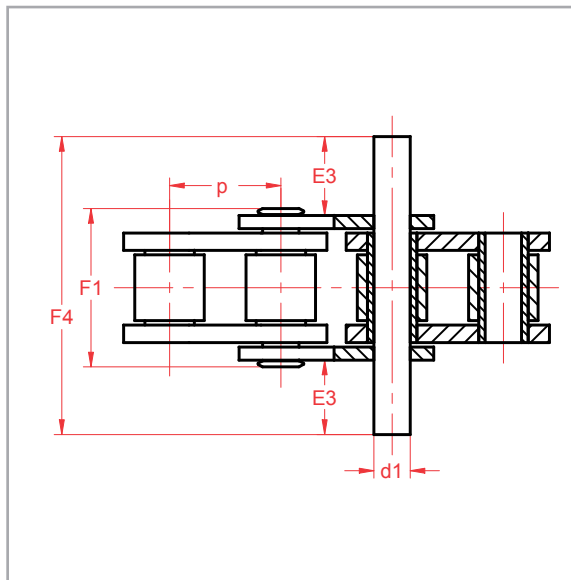
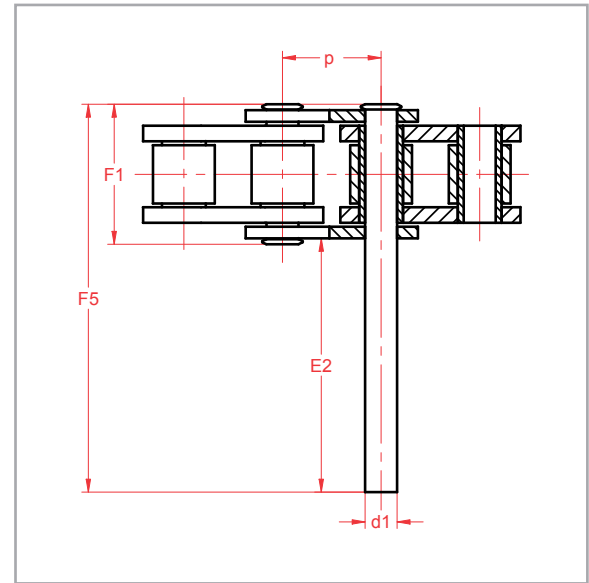
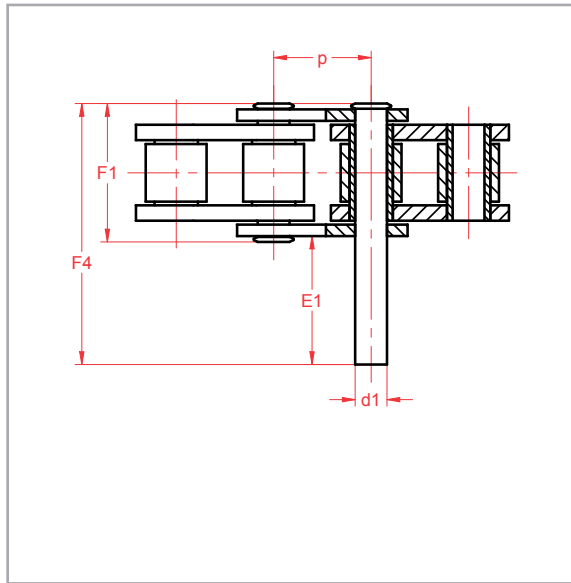


Rollenketting

DIN 8187 met verlengde bouten



Nr.	Inch	p mm	d_1 mm	F_1 mm max.	F_4 mm max.	F_5 mm max.	E_1 mm max.	E_2 mm	E_3 mm max.	E_4 mm
06B-1	3/8"	9,525	3,28	13,5	23,8	34	11	21,6		11,15
08B-1	1/2"	12,7	4,45	17	31	44,9	15,3	29,5		15,3
10B-1	5/8"	15,875	5,08	19,6	36,2	52,8	18,2	34,8		18
12B-1	3/4"	19,05	5,72	22,7	42,2	61,7	21	40,5		20,9
16B-1	1"	25,4	8,28	36,1	68	99,9	34,5	66,4	18	34
20B-1	1 1/4"	31,75	10,19	43,2	79	116	39,4	76,4	20,6	39,1
24B-1	1 1/2"	38,1	14,63	53,4	101	150	50,4	99,4	26,2	50,7